



Colliers

Accelerating success

# Riverfront Plaza

901 & 951 E Byrd St  
Richmond, VA

Beautiful views of  
Downtown Richmond  
and the James River

# Riverfront Plaza

Located along Richmond's Riverfront in the financial district, within walking distance to Shockoe Slip, the State Capitol and VCU Health Systems.

- Common conference facility fully equipped with audio/visual, seating approximately 65
- Tenant Fitness Center located on the Plaza Level featuring aerobic and weight machines, lockers and showers
- Optician and Full Service Optical Center located on the Plaza Level.
- An auto detail shop is located in the parking garage and offers car wash, wax and detailing services
- A one acre landscaped garden with outdoor seating between the buildings offering panoramic views of the James River and direct access to the canal walk
- Storage space available

## East Tower

|              |                                |                 |                  |
|--------------|--------------------------------|-----------------|------------------|
| 9   East     | 17,079 ± sq. ft.               | 7   West        | 4,098 ± sq. ft.  |
| 5   East     | 1,188 ± sq. ft.                | 6   West***     | 22,969 ± sq. ft. |
| 4   East     | 11,425 ± sq. ft.               | 5   West***     | 22,969 ± sq. ft. |
| 3   East     | 23,712 ± sq. ft.               | 4   West***     | 22,969 ± sq. ft. |
| Plaza   East | 2,022 ± sq. ft.                | 3   West***     | 31,176 ± sq. ft. |
| Plaza   East | 8,046 ± sq. ft.<br>(cafeteria) | 2   West***     | 30,435 ± sq. ft. |
|              |                                | Plaza   West*** | 8,802 ± sq. ft.  |
|              |                                | Plaza   West*** | 1,060 ± sq. ft.  |
|              |                                | Plaza   West    | 3,164 ± sq. ft.  |
|              |                                | Plaza   West    | 1,440 ± sq. ft.  |

## West Tower

|            |                  |
|------------|------------------|
| 18   West* | 14,028 ± sq. ft. |
| 17   West* | 22,970 ± sq. ft. |
| 11   West  | 1,704 ± sq. ft.  |
| 11   West  | 1,546 ± sq. ft.  |
| 8   West** | 7,326 ± sq. ft.  |
| 8   West** | 5,944 ± sq. ft.  |

\*Floors 17 and 18 can be combined for a total of 36,998 contiguous SF.

\*\*8 | West suites can be combined for a total of 13,270 contiguous SF.

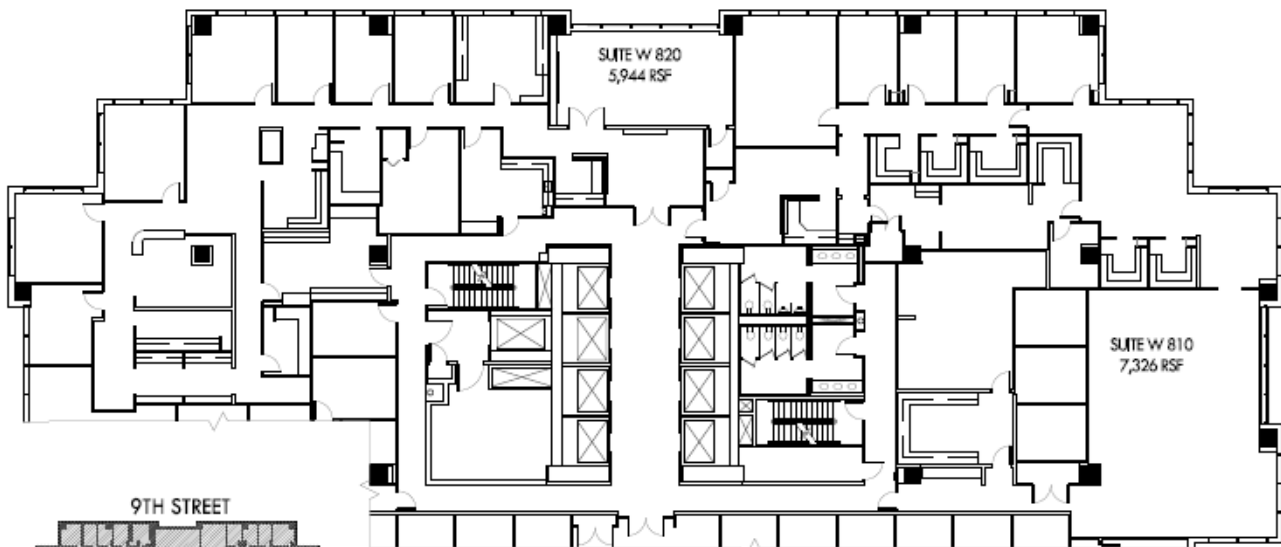
\*\*\*Contiguous space totaling 139,320 sq. ft. (excluding ATM and storage space)



## Premier Class A Office Space

- Located along Richmond's Riverfront in the financial district, within walking distance to Shockoe Slip, the State Capitol and VCU Health Systems.
- Beautiful views of Downtown Richmond, the Kanawha Canal and the James River.
- Immediate access to Brown's Island and the Canal Walk.
- Numerous restaurants, hotels and retail within walking distance.

# 8 RIVERFRONT PLAZA



9TH STREET

BYRD STREET



KEY PLAN

NOT TO SCALE



WEST TOWER 8TH FLOOR - SUITE 810 - 820: 13,270 RSF

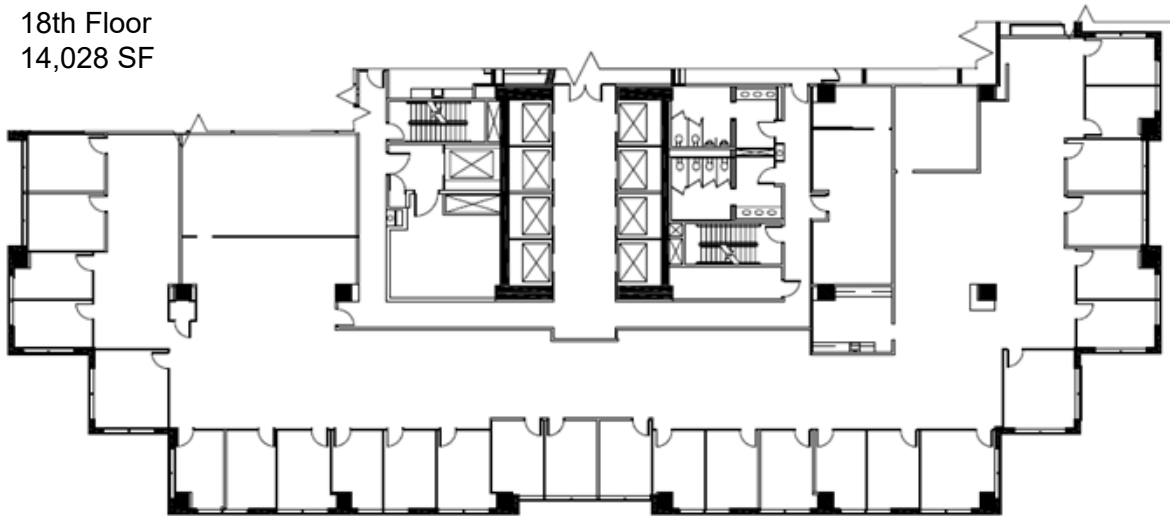
10.2021  
NOT TO SCALE

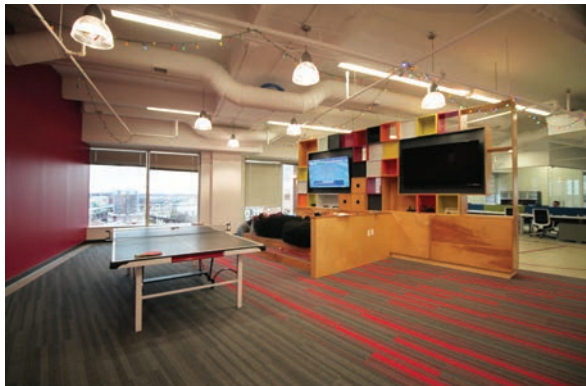
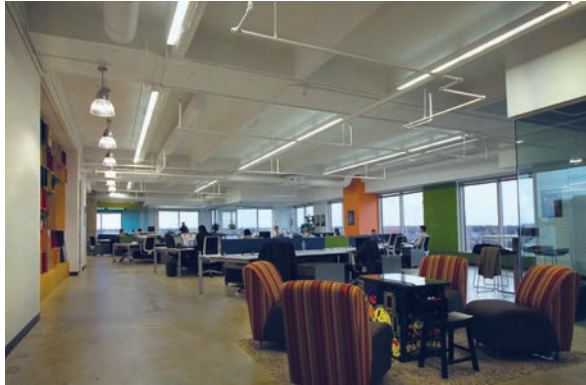


HERTZ  
INVESTMENT  
GROUP



18th Floor  
14,028 SF







**Contact us:**

**John Carpin**

Senior Vice President

+1 804 267 7216

[john.carpin@colliers.com](mailto:john.carpin@colliers.com)

**Gray Bryant**

Associate

+1 804 237 8087

[gray.bryant@colliers.com](mailto:gray.bryant@colliers.com)



2221 Edward Holland Dr  
Suite 600 | Richmond, VA  
P: +1 804 320 5500  
F: +1 804 320 4839

This document has been prepared by Colliers International for advertising and general information only. Colliers International makes no guarantees, representations or warranties of any kind, expressed or implied, regarding the information including, but not limited to, warranties of content, accuracy and reliability. Any interested party should undertake their own inquiries as to the accuracy of the information. Colliers International excludes unequivocally all inferred or implied terms, conditions and warranties arising out of this document and excludes all liability for loss and damages arising there from. This publication is the copyrighted property of Colliers International and/or its licensor(s). ©2023. All rights reserved.